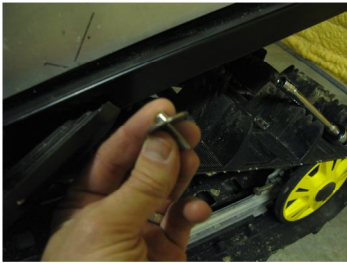




Metal Ski Bracket Mounting Instructions

Page 5

Step #15



Step #15

Go and grab the ladder bracket with ladder strap. If you are able to get behind the tunnel use the 10/24 bolts for installation. If you are not able to get your hand inside the tunnel use the Rivets.(Step 17) Place Fender washer over 10/24 bolt. Place bolt inside tunnel and into drilled hole so the threads are sticking outside of snowmobile. Repeat with other bolt.

Step #16



Step #16

Place ladder bracket with ladder on top of bolts sticking out side of tunnel. Put small washers and nuts on top of threads of bolts. Use 4mm allen key inside tunnel to hold bolt. Ratchet with 3/8th socket and tighten both bolts tight.

Step #17



Step #17

If you are not able to get on the inside of your tunnel you will have to use rivets. Go and get your rivet gun, Ladder bracket and rivets. Place rivet in gun. Put rivet through ladder bracket and into holes on the side tunnel of snowmobile. Squeeze rivet gun until it pops Repeat on other hole.

Step #19

Step #20



Place the ski in rack. Go were the ski hits the running boards. Grab the U channel and place it under ski. Remove the ski and grab your marker pen. Mark a hole in the bolt hole of U channel on running board. Remove the u channel. Look underneath running board where hole is marked. Is there anything underneath that i will damage by drilling a hole here? If no then proceed to use your hole punch and hammer on marked spot. Go and grab your drill and Drill hole with 1/8" drill bit first and finish with 1/4" hole.

Step #20

Grab your 1" pan head bolt, washer and nut. Fasten U channel with Philips head and 7/16ths ratchet. Repeat on other side. Go out sledskiing ASAP!!

